

arjete



Can Yalman sees forming a team with the Client as the most important element in the success of a new product during the design phase. He has realized design projects for companies to include Kale, Hisar, Arçelik/Beko, Bosch, Teba, Tariş Inform, BAT and Numarine.

Among the awards he received are LG Electronic Design Competition (1999), Design Explorations Award (2001), Steelcase Mondo Materials Award (2001) and recently ETMK Design Winners Award (2006) and ELLE DECOR International EDIDA Award (2007) for Reptile Collection he designed for Çanakkale Seramik.

Can Yalman aims the design to be a complementary philosophy in the very essence of humanity and thinks design as a power to influence the future. That's why he believes his designs should be timeless, comprehensive, technological and valuable in addition to aesthetics and functionality.

reptile

Çanakkale Seramik, which initiated a project in cooperation with Turkey's leading designer Can Yalman, is now launching a new and original collection for the appreciation of the consumers. Reptile is the new collection created by Çanakkale Seramik upon considering ergonomics, functionality, producibility, applicability factors along with aesthetics, where original perspective of Can Yalman translated nature into ceramic tiles.

The Reptile Collection is a unique creation in the world of tiles. Inspired by some of nature's oldest and most fascinating creatures, the designer has created a radically modern interpretation of organic forms. Be prepared to find something unexpected from ceramics and in locations where you might never have expected to find tiles. In Reptile Collection tiles open out the possibility for all forms of creative applications, whether in bathrooms or living areas. Like the untamed creatures they are named after, Reptile must be allowed to roam free and far in the designer's imagination, unlimited by normal conventions unconfined by classical definitions. Rather than being a little noticed surfacing material, the Reptile series' tiles are more like individual designer items, decorative enough to deserve being on individual display.

The magnificent textures, vivid colors and rich designs of nature all meet in the new Reptile Collection. The rhythmic lines of Reptile series, which transform the applied texture into a living and breathing space with a new look, is created to gain life on walls. The magnificent skins of nature's mysterious creatures snake and the crocodile are carried onto ceramics with their natural reflections. The walls are being converted into skin with Reptile series. The collection, which brings a new dimension to the tile through modular installation of each ceramic tile, consists of two series as "Snake" and "Crocodile".

Reptile: An award-winning ceramic for its technology and design

Reflecting the Collection's division into snake and crocodile-inspired forms, the tiles are available in two series of shapes. The irregularly sized rectangular tiles of the crocodile series can be arranged at will to create a perfectly fitted surface with regular edges, while creating the impression of a flowing, organic form. A pleasing symmetry allows this perfect fit, while leaving the complex irregularity we expect in nature. The shining tiles themselves are sensually shaped in a concave form which invites light to come and play and the hand to touch.

The snake series tiles are shaped in interlocking, diamond-like scales, to form a regular and dramatic skin which looks ready at any moment to bend and wrap itself around its prey. The shining surface is split from an elevated central ridge, highlighting an aggressive, and arrowhead form. Seen as a whole, the platelets seem bonded in mutual strength to protect each other. Smooth, strong, defiant, yet irresistible to the touch, the surface fascinates us just as snakes have always fascinated mankind with their strange and dangerous beauty.

A final award for Reptile: From Design Distinction...

Çanakkale Seramik which aims to increase the quality of living with its designs which aren't just aesthetic, they're also ergonomic, functional, productive, and practical and with its Reptile line it aims to carry it to a third dimension by creating an illusion from visual perception of a two dimensional surface. Among the awards that Reptile has won are the ELLE DÉCOR International Design awards the (EDIDA) "Wall Covering" award and the "ETMK Winners with Design" award from ETMK (Industrial Designers' Society of Turkey) of which only 5 products from a total of 66 product designs were awarded from 12 sectors. And lastly, it was deemed worth receiving the "Design Distinction", one of the world's most prestigious awards presented by the I.D Annual Design Review.



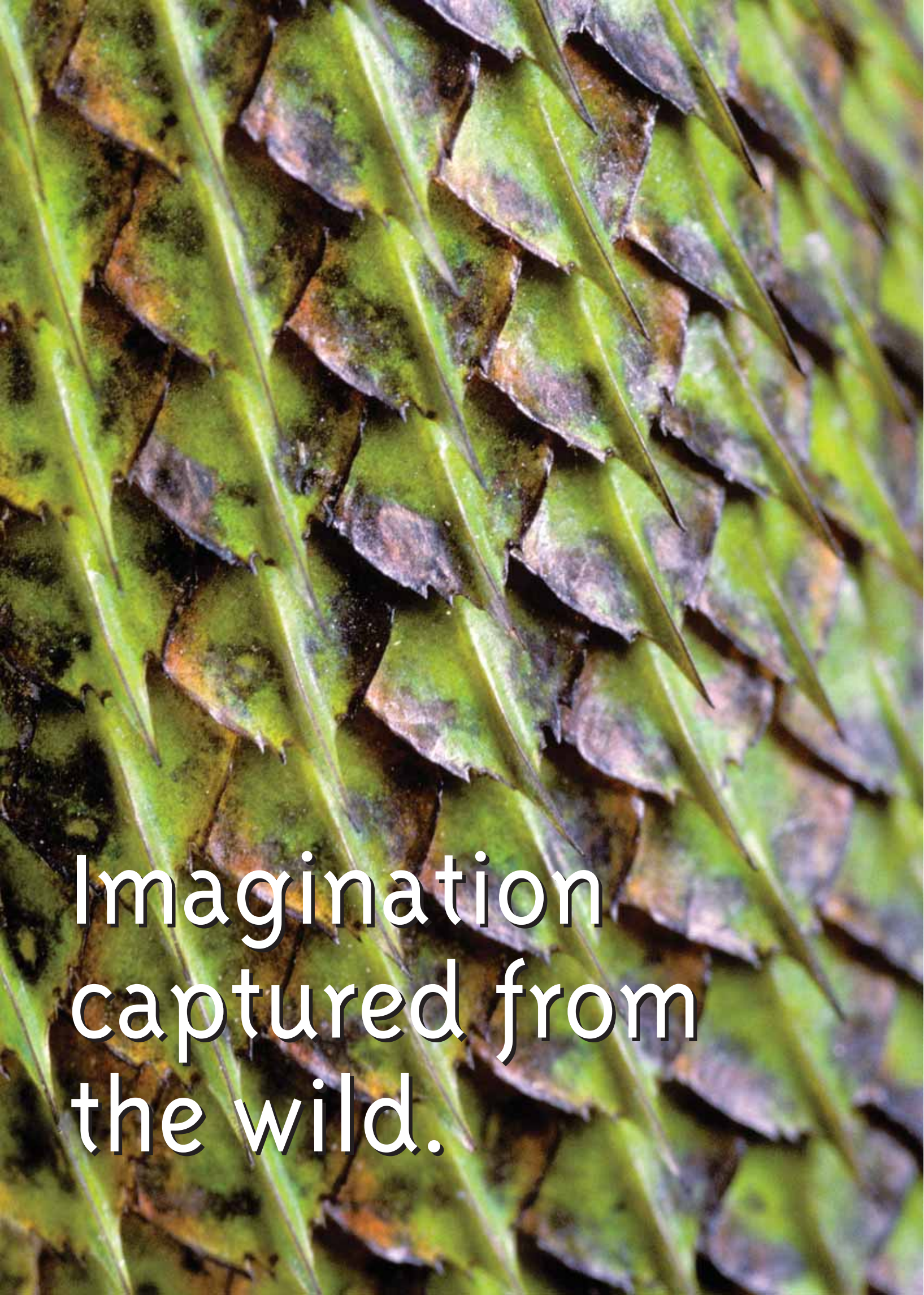




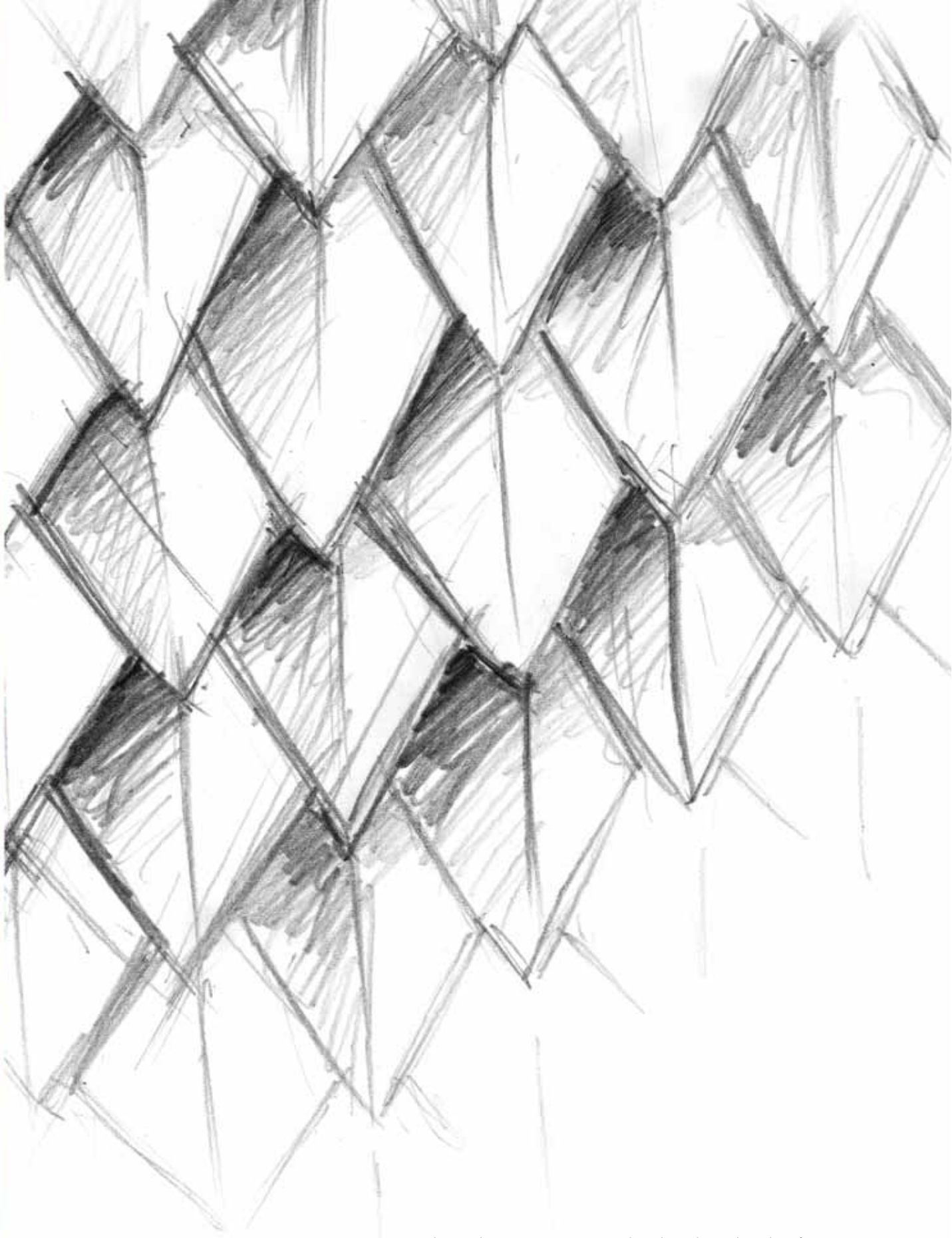
nature is full of
exotic colors &
graphic
shapes.

A detailed close-up photograph of a snake's body, focusing on the intricate pattern of its scales. The scales are dark, possibly black or very dark brown, with a glossy sheen that reflects light, creating highlights and shadows that emphasize their three-dimensional, overlapping structure. The pattern is a regular grid of small, rounded scales. In the upper center, a small, dark, circular opening, likely a nostril, is visible. The background is blurred, showing more of the snake's body and scales, which helps to isolate the main subject.

snake

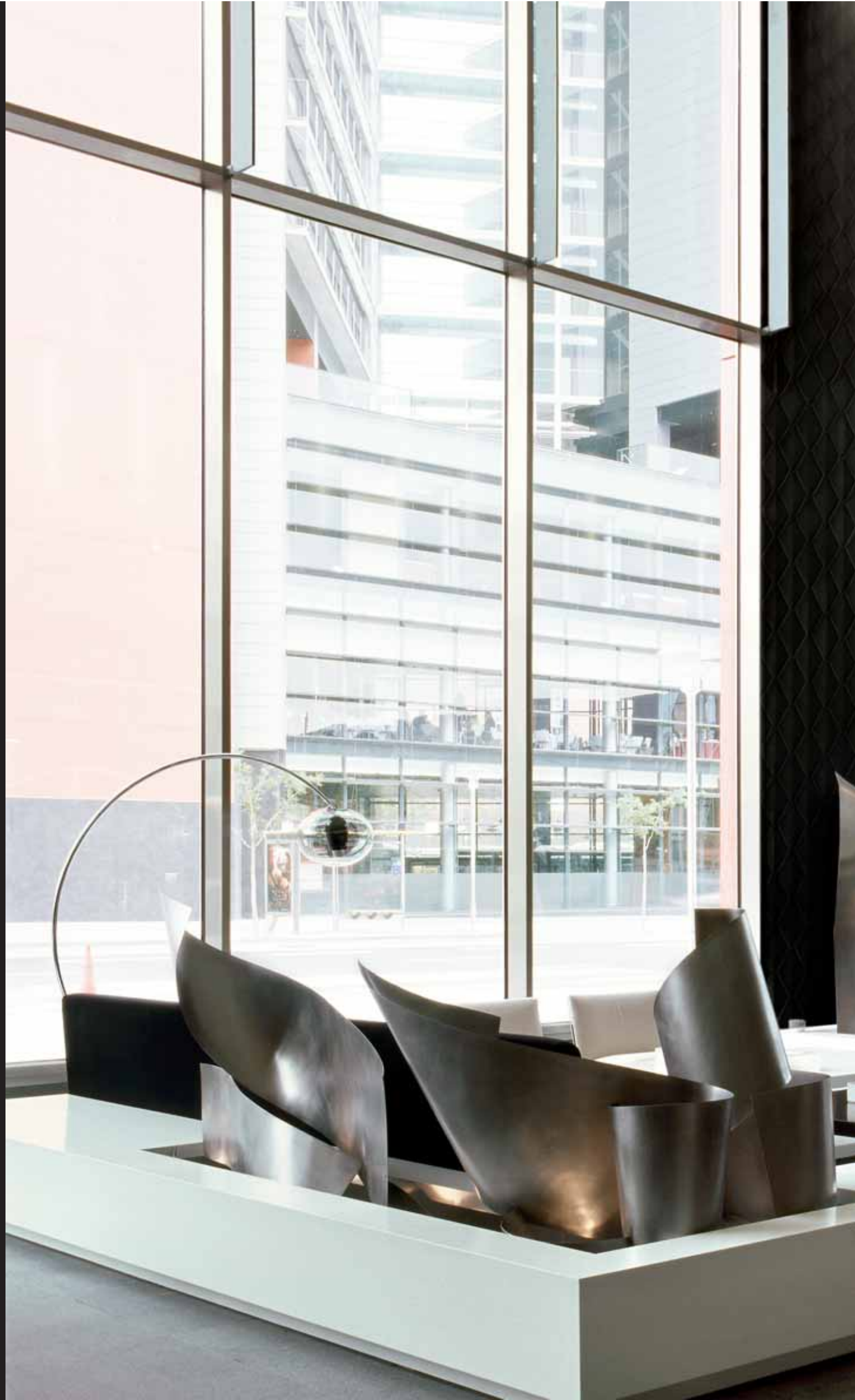


Imagination
captured from
the wild.



The Snake series, comprises rhombus shaped snake tile texture, where each tile represents a single scale of the skin. When brought together these tiles create a deep temptation for touching them as if it is a live skin.







snake



Porcelain White
16x20
SN-0001



Porcelain White
8x20
SN-0201



Porcelain White
8x20
SN-0101



Matte White
8x20
SN-0202



Matte White
8x20
SN-0102



Matte White
16x20
SN-0002



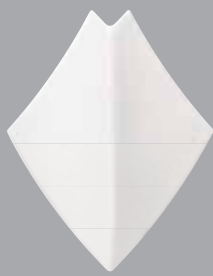
Full Luster White
16x20
SN-0018



Opaque White
8x20
SN-1201



Opaque White
8x20
SN-1101



Opaque White
16x20
SN-1001



Glossy Black
16x20
SN-0003



Glossy Black
8x20
SN-0203



Glossy Black
8x20
SN-0103



Matte Black
8x20
SN-0204



Matte Black
8x20
SN-0104



Matte Black
16x20
SN-0004



Fuchsia
16x20
SN-0005



Fuchsia
8x20
SN-0205



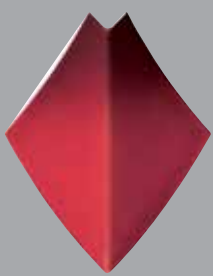
Fuchsia
8x20
SN-0105



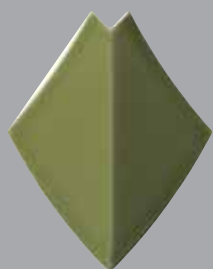
Smoked Fuchsia
8x20
SN-0207



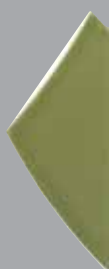
Smoked Fuchsia
8x20
SN-0107



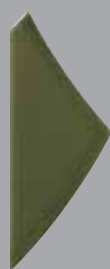
Smoked Fuchsia
16x20
SN-0007



Dark Green
16x20
SN-0008



Dark Green
8x20
SN-0208



Dark Green
8x20
SN-0108



Light Green
8x20
SN-0210



Light Green
8x20
SN-0110



Light Green
16x20
SN-0010



Beige Green
16x20
SN-0012



Beige Green
8x20
SN-0212



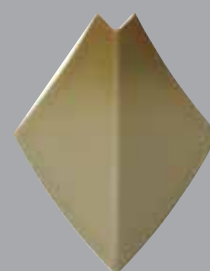
Beige Green
8x20
SN-0112



Smoked Beige Green
8x20
SN-0214



Smoked Beige Green
8x20
SN-0114



Smoked Beige Green
16x20
SN-0014



Matte Beige
16x20
SN-0016



Matte Beige
8x20
SN-0216



Matte Beige
8x20
SN-0116



Glossy Brown
8x20
SN-0217



Glossy Brown
8x20
SN-0117



Glossy Brown
16x20
SN-0017



Yellow
16x20
SN-0006



Yellow
8x20
SN-0206



Yellow
8x20
SN-0106



Corner Part - 2



Corner Part - 1

*8x20 cm size tile are accessory right and left end pieces.

collaboration of nature & style.

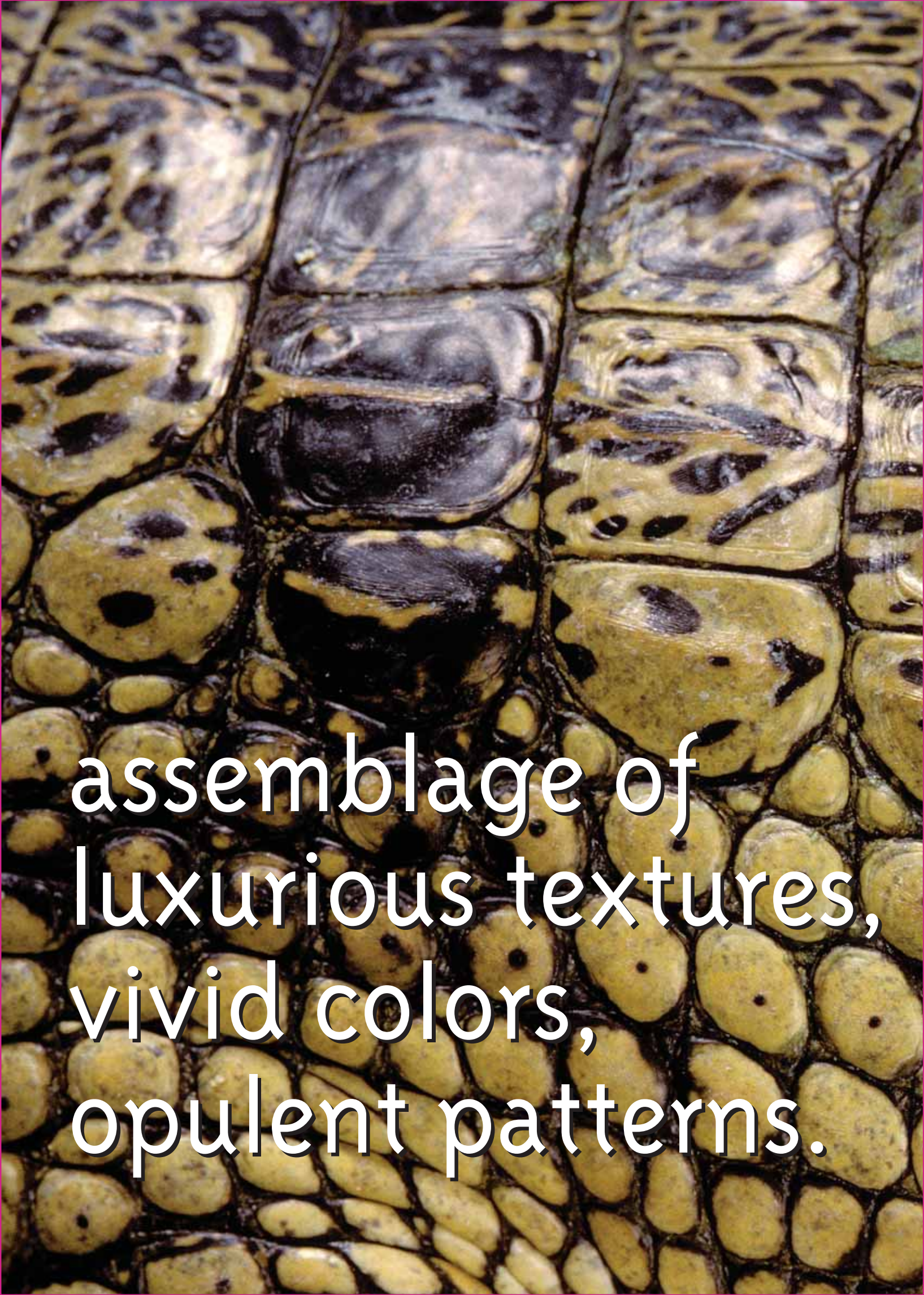








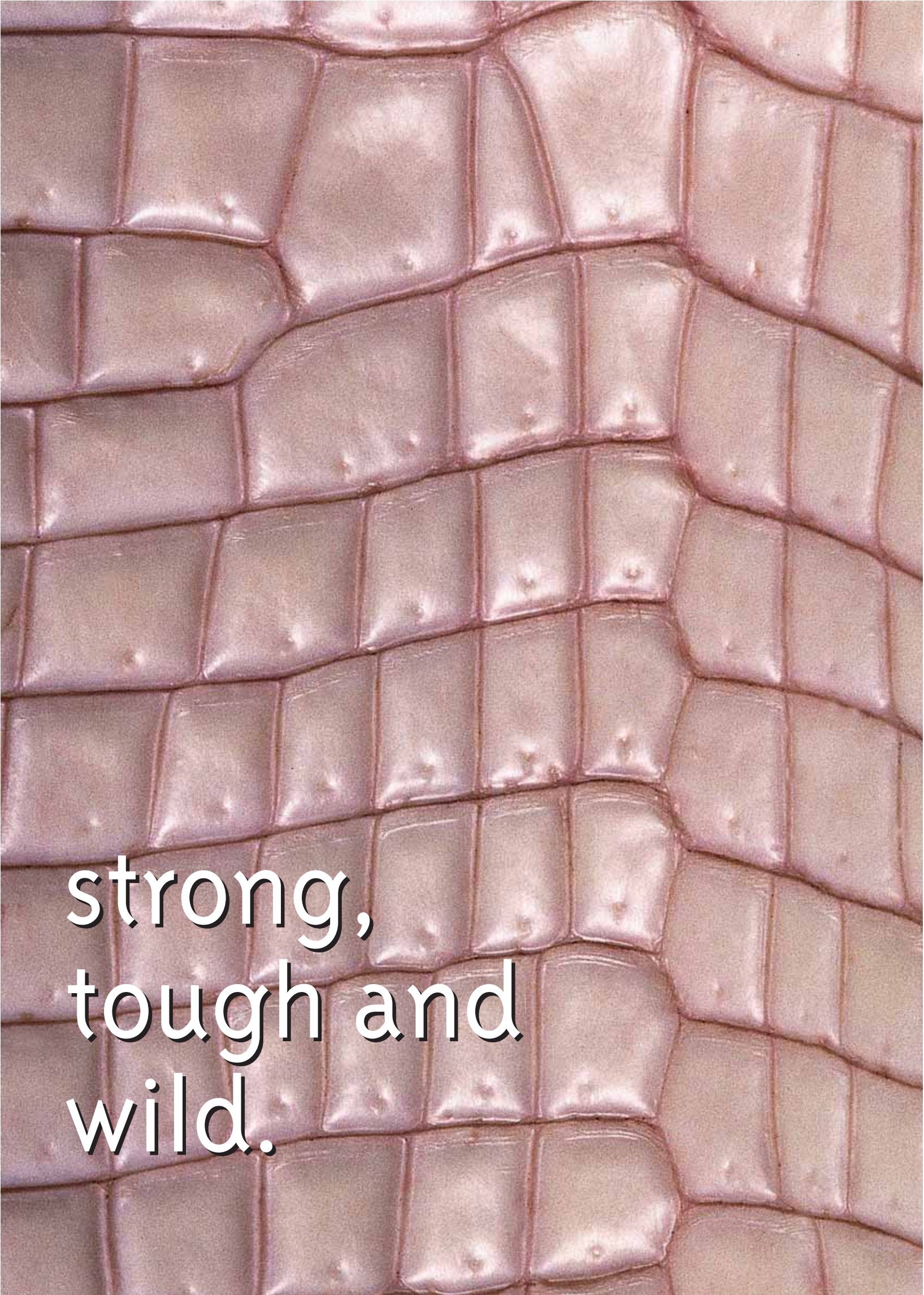
imagination
is born
free.



assemblage of
luxurious textures,
vivid colors,
opulent patterns.

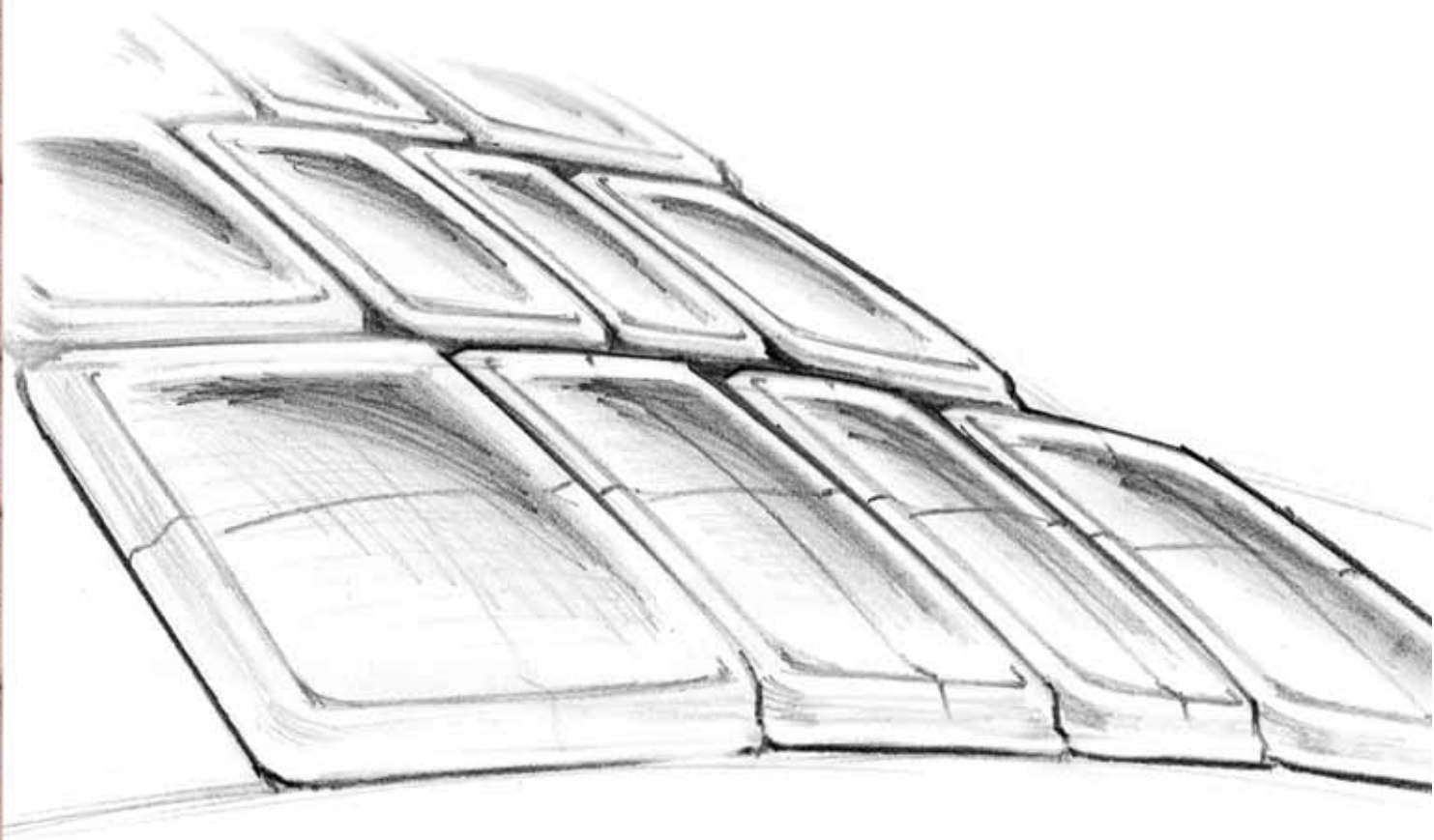


crocodile



strong,
tough and
wild.

Crocodile series comprised of five different sizes which, when brought together, reflect the pattern diversity on the real crocodile skin. The color of the skin extends from pure white to crazy beige-green crocodile tones.





fascinating alignment.





crocodile

Opaque White
7,5x17,5
10x17,5
12,5x17,5
15x17,5
17,5x17,5



CT-1001



CT-2001



CT-3001



CT-4001



CT-5001

Matte White
7,5x17,5
10x17,5
12,5x17,5
15x17,5
17,5x17,5



CT-1002



CT-2002



CT-3002



CT-4002



CT-5002

Matte Beige
7,5x17,5
10x17,5
12,5x17,5
15x17,5
17,5x17,5



CT-1016



CT-2016



CT-3016



CT-4016



CT-5016

Glossy Black
7,5x17,5
10x17,5
12,5x17,5
15x17,5
17,5x17,5



CT-1003



CT-2003



CT-3003



CT-4003



CT-5003

Matte Black
7,5x17,5
10x17,5
12,5x17,5
15x17,5
17,5x17,5



CT-1004



CT-2004



CT-3004



CT-4004



CT-5004

Fuchsia
7,5x17,5
10x17,5
12,5x17,5
15x17,5
17,5x17,5



CT-1005



CT-2005



CT-3005

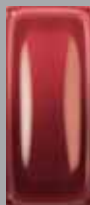


CT-4005

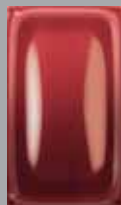


CT-5005

Smoked Fuchsia
7,5x17,5
10x17,5
12,5x17,5
15x17,5
17,5x17,5



CT-1007



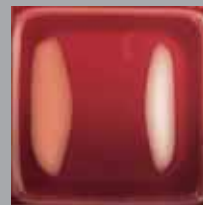
CT-2007



CT-3007



CT-4007



CT-5007

Beige Green
7,5x17,5
10x17,5
12,5x17,5
15x17,5
17,5x17,5



CT-1012



CT-2012



CT-3012



CT-4012



CT-5012

Smoked Beige Green
7,5x17,5
10x17,5
12,5x17,5
15x17,5
17,5x17,5



CT-1014



CT-2014



CT-3014

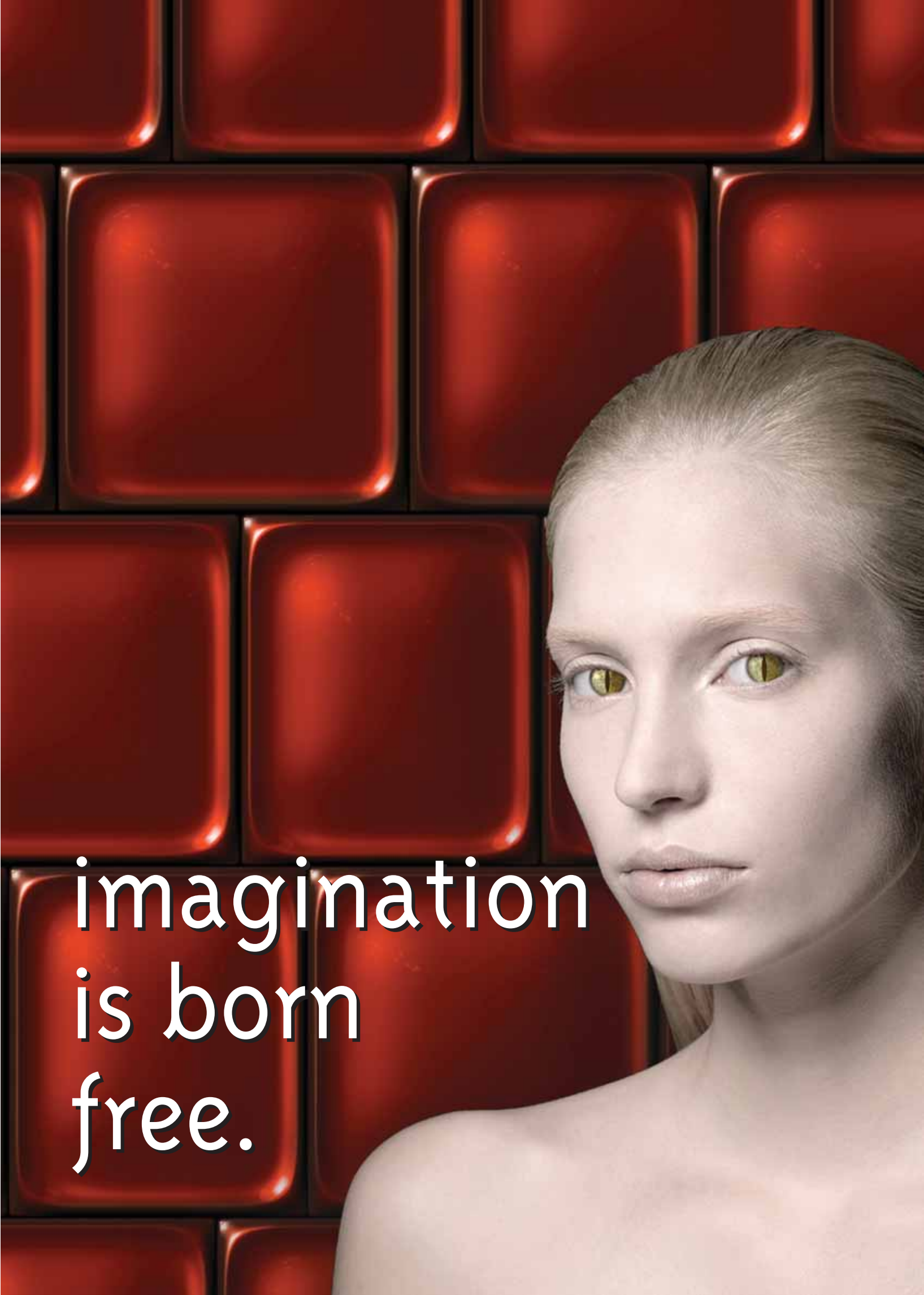


CT-4014



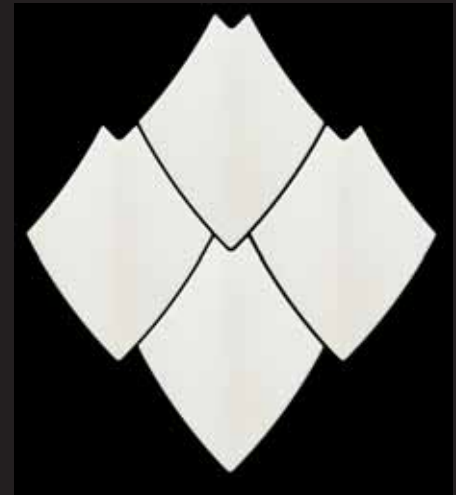
CT-5014





imagination
is born
free.

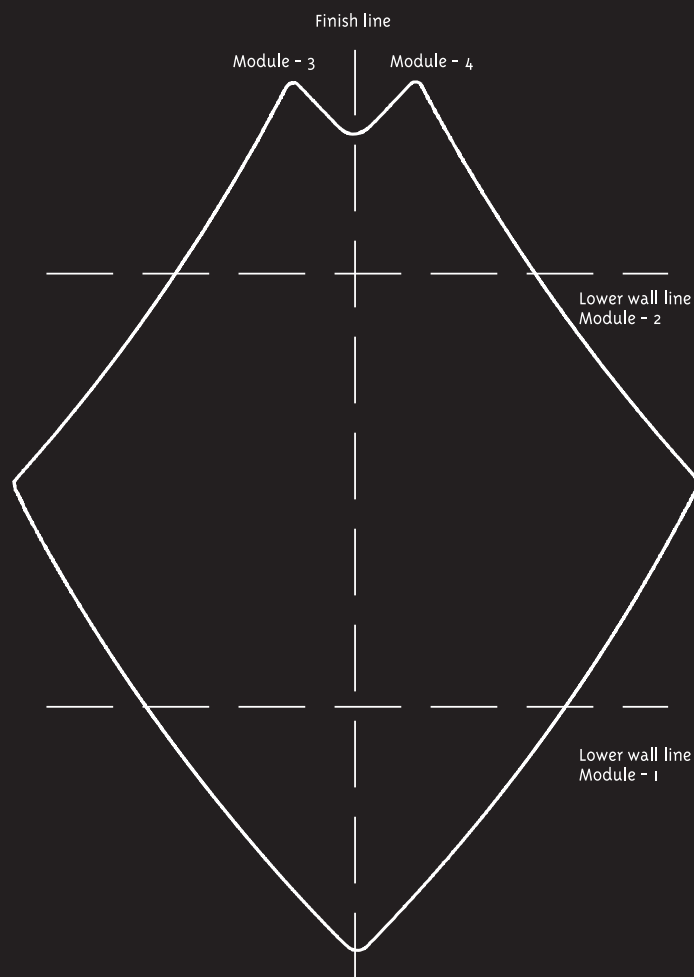
Reptile Tiling Patterns



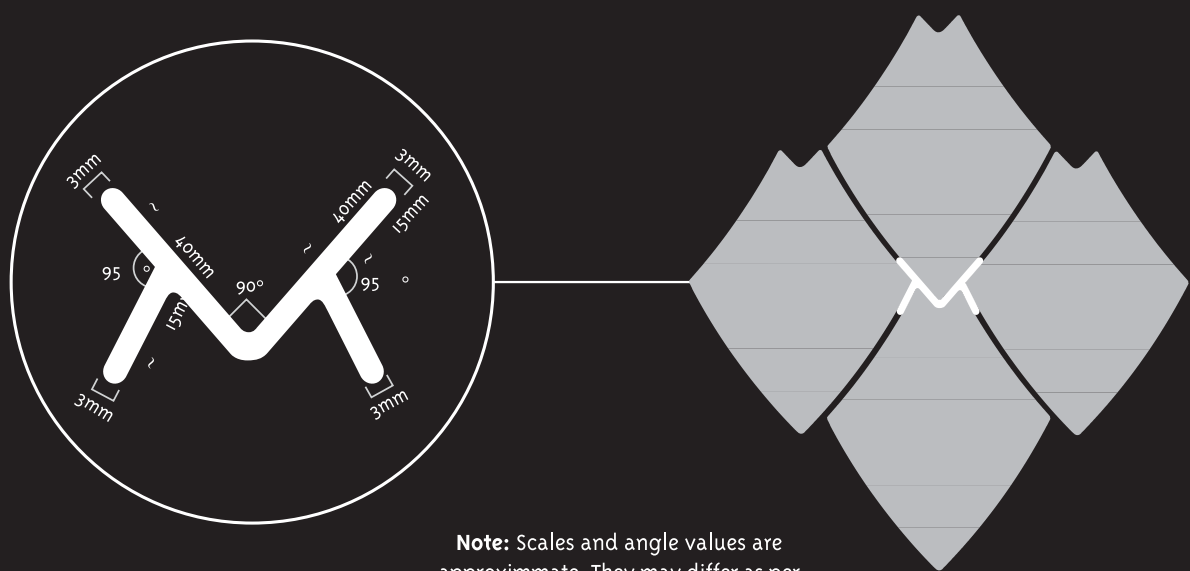
Reptile Display Units



Snake Tiling Pattern



Snake Special Spacer



Note: Scales and angle values are approximate. They may differ as per one-on-one patterns are used.

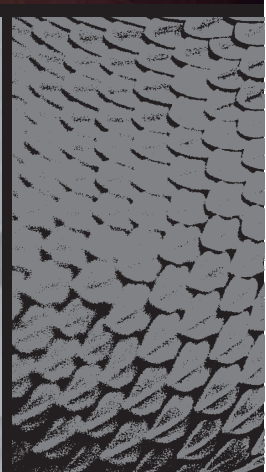
Çanakkale Seramik Wall Tiles conform to the Turkish and European standards indicated below.

TS-EN	Technical Characteristics		Turkish & European Standard TS-EN 14411 / ANNEX L BIII GL	Çanakkale Seramik
ISO 10545-2	Deviations from Dimensions	Lenght & Width (cm)	L < 12 cm. ± 0.75 % L > 12 cm. ± 0.5 %	± % 0.75 ± % 0.5
		Thickness (%)	± % 10	± % 10
ISO 10545-2	Rectangularity (%)		Max. ± % 0.5	± % 0.5 (**)
ISO 10545-2	Straightness of Sides (%)		Max. ± % 0.3	± % 0.3 (**)
ISO 10545-2	Surface Flatness (%)		Centre Curvature: + % 0.5, - % 0.3 Edge Curvature : + % 0.5, - % 0.3 Warpage : ± % 0.5	+ % 0.5, - % 0.3 (**) + % 0.5, - % 0.3 (**) ± % 0.5 (**)
ISO 10545-2	Surface Quality (%)		% 5 Defective	Affirmative
ISO 10545-3	Water Absorption (%)		Ave. 10 %, When the value exceeds 20 % this shall be indicated by the manufacturer. Individual Min. 9 %	Ave. % 16
ISO 10545-4	Breaking Strenght (N)		Thickness ≥ 7.5 mm Min. 600 N Thickness ≥ 7.5 mm Min. 200 N	1100 N 850 N
ISO 10545-4	Modulus of Rupture (N/mm ²)		Thickness ≥ 7.5 mm Min. 15 N / mm ² Thickness ≥ 7.5 mm Min. 12 N / mm ²	Ave. 23 N / mm ²
ISO 10545-8	Lineer Thermal Expansion Coefficient (100°C)		Max. 9x10 ⁻⁶ / °C	6 x 10 ⁻⁶ / °C
ISO 10545-9	Resistance to Thermal Shock		Required	Affirmative
ISO 10545-10	Moisture Expansion (mm/m)		% 0.06 (0.6 mm/m)	Affirmative
ISO 10545-11	Crazing Resistance for Glazed Tiles		Required	Affirmative
ISO 10545-13	Resistance to High/Low Acids & Alkalis		Required	Affirmative
ISO 10545-13	Resistance to Household Chemicals		Min. GB	Affirmative
ISO 10545-13	Resistance to Swiming Pool Chemicals		Required	Affirmative
ISO 10545-14	Resistance to Staining		Min. 3	Affirmative



Packing

Size	Product Name	Thickness (mm)	Weight/Box (kg)	Squaremeters per Box (m ² -box)	Tiles per Box (pcs)	Squaremeters per Pallet (m ² -pallet)	Boxes per Pallet (pcs)
16x20 6 3/8"x 8"	Snake	7	5.60	0.4	22	19.20	48
7,5x17,5 3" x 7"	Crocodile	9.5	3.69	0.21	16	17.64	84
10x17,5 4" x 7"	Crocodile	9.5	4.49	0.28	16	23.52	84
12,5x17,5 5" x 7"	Crocodile	9.5	5.46	0.35	16	16.80	48
15x17,5 6" x 7"	Crocodile	9.5	6.56	0.42	16	20.16	48
17,5x17,5 7" x 7"	Crocodile	9.5	6.70	0.49	16	23.52	48



kale.com.tr

■ Çanakkale Seramik

Kaleseramik, Çanakkale Kalebodur Seramik San. A.Ş.
Büyükdere Cad. Kaleseramik Binası 34330 Levent - İstanbul / Turkey
T +90 212 371 5253 (pbx) F +90 212 270 6571
kaleseramik@kale.com.tr